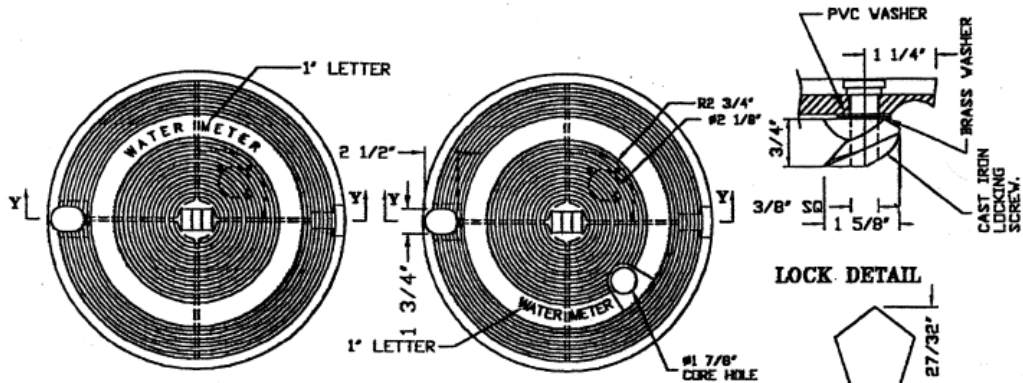


CAPITOL FOUNDRY OF VA, INC.

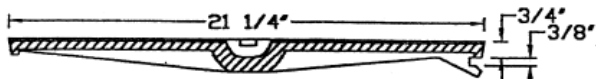
2856 CRUSADER CIRCLE
 VIRGINIA BEACH, VA 23453
 PHONE: (757) 427-9431
 FAX: (757) 427-9308
 www.capitolfoundry.net

AVAILABLE WITH
 TOUCH READ HOLE

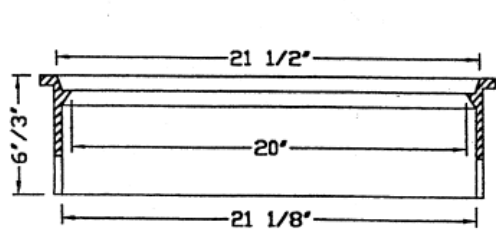
ALSO AVAILABLE
 MARKED 'SEWER'



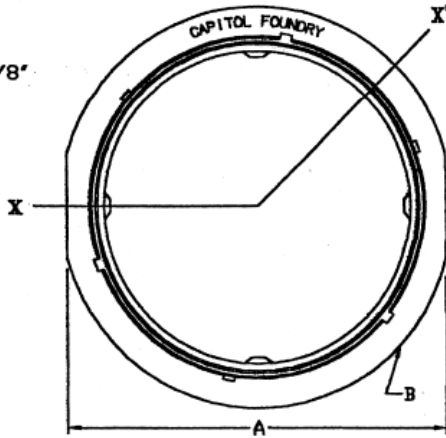
TYPE-I SOLID COVER TYPE-II COVER (WITH HOLE) SMALL (STANDARD)



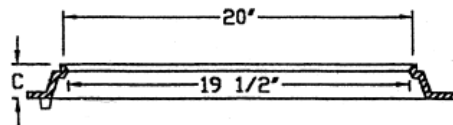
COVER SECTION-YY'



TOP RING SECTION



FRAME TOP VIEW



SECTION-XX'

	A	B	C
I.	25 3/8"	26 1/4"	1 7/8"
II.	31 3/8"	32 1/4"	1 7/8"
III.	38 1/8"	39"	2 3/8"

LOCKING 20" MONITOR STYLE METER BOX & LID (WITH FLANGE)

MATERIAL SPEC: ASTM A-48 CLASS 35B

ITEM #MBX-1241*