

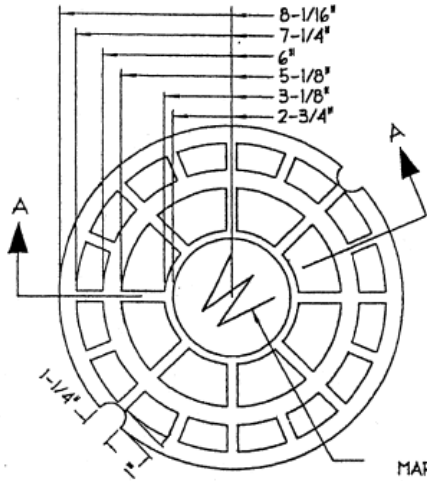
CAPITOL FOUNDRY OF VA, INC.

2856 CRUSADER CIRCLE
VIRGINIA BEACH, VA 23453

PHONE: (757) 427-9431

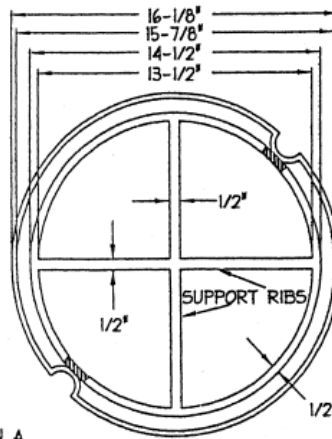
FAX: (757) 427-9308

www.capitolfoundry.net



COVER: TOP

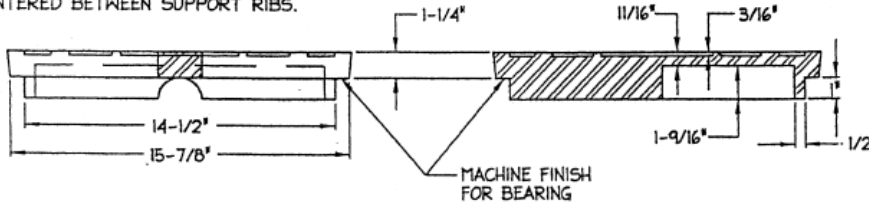
MARK WITH A
"W" OR "S"



COVER: BOTTOM

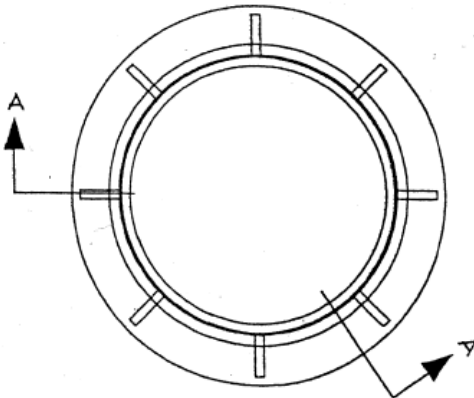
LID AVAILABLE
MARKED 'S' OR 'W'

BOTTOM SUPPORT RING TO BE
NOTCHED DIRECTLY UNDER PICK HOLE
ON BOTH SIDES. NOTCHES TO BE
CENTERED BETWEEN SUPPORT RIBS.

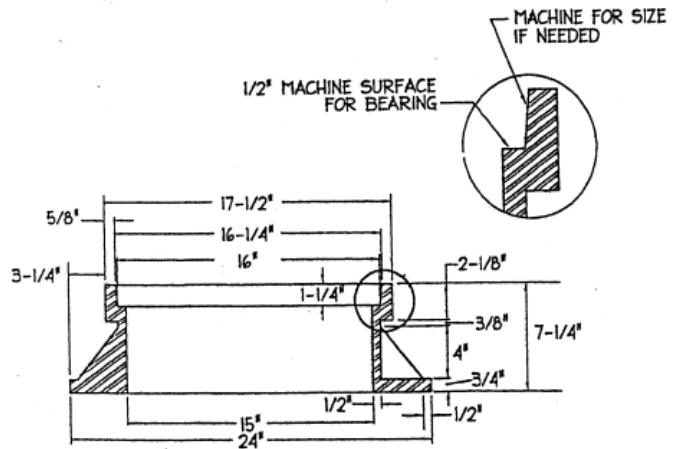


SIDE VIEW

SECTION A-A



FRAME: TOP



SECTION A-A

HAMPTON ROADS STANDARD VALVE BOX & LID

MATERIAL SPEC: ASTM A-48 CLASS 35B

ITEM #NPN-15*HR